



PROKENNEX PADEL.

SEASON 2K23

HI-TECH RESEARCH AND DEVELOPMENT AT THE SERVICE OF YOUR GAME.

kinetic SYSTEM

The revolutionary **Kinetic System®** consists of inserting special capsules in the frame with hundreds of microspheres inside (Kinetic Mass). The action of the microspheres gives the shot a significant increase in accuracy and power as well as protecting the limb from the vibrations caused by impact.



• During acceleration, the spheres gather on the walls of the capsules in the opposite direction to the ball.

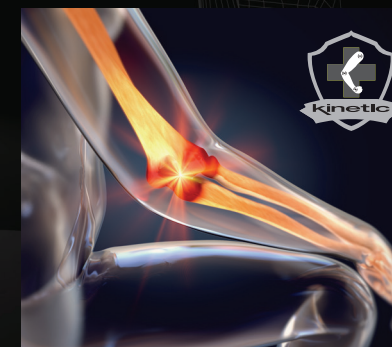


• Upon impact, the microspheres project towards the ball, releasing additional energy.



• Immediately after impact, the microspheres move freely within the capsules, rebalancing the frame.

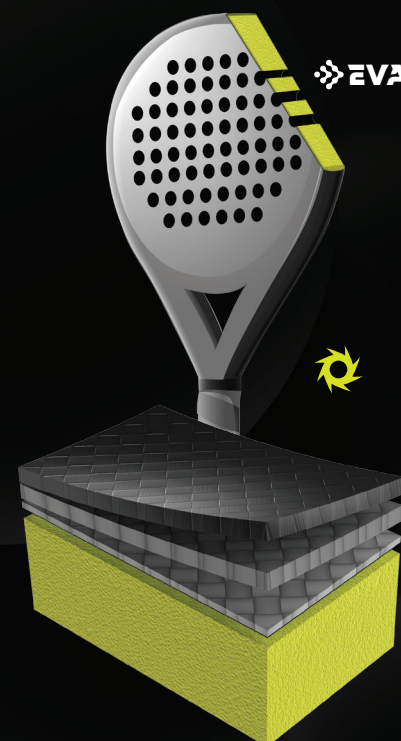
Kinetic® technology is an energy management system designed to **increase shot performance** while **protecting the arm from damaging forces that lead to injury**.



While the **Kinetic System®** increases frame performance through “energy transfer”, the **Kinetic Damping Chamber®** acts on residual vibrations before they reach the hand.

The Kinetic Damping Chamber® eliminates residual vibration due to the shock caused by ball impact, dramatically reducing hand and forearm fatigue and allowing the frame to quickly stabilise to its original state. The system, perfectly integrated into the frame, contains Kinetic Mass and when the swings reach the chamber, the balls disperse the vibrations through movement and friction.

Incredible playing comfort, given by a significant reduction in arm fatigue, combined with a significant increase in accuracy and power of the shot, make for a unique playing experience.



High comfort is provided by the new latest-generation Hyper Soft Eva and Soft EVA with **improved densities to ensure greater ball speed** and improved stroke execution.



3 reinforced layers of Graphite Spiral Tech Carbon® for **effective frame protection**. An additional graphite layer on the **sweet spot area for improved precision**.



The new Geo-Dynamic® technology uses different hole sizes and a special hole distribution that makes the **frame extremely balanced** and gives the impact surface the ideal flexibility to create a **larger sweet spot**.



Special embossed surface designed to increase friction on the ball and achieve a **deadly ball strike in all spins**.

kinetic
GRASP

BLACK ACE



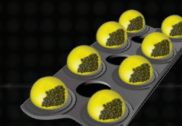
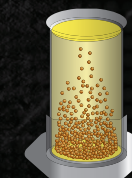
ULTRASPIN

The head has a special **3D Grain Surface®** texture with a pattern of **GeoDinamic Hole Design®** holes that give spin shots a deadly rotation.



VIBRAZERO

The **Kinetic System®** incorporated in the frame and the **Kinetic Damping Chamber®** absorb all the vibrations of the shot, drastically reducing arm fatigue and increasing shot precision.



HYPERCONTROL

The addition of a **PK Bridge®** gives the whole frame the necessary stability to allow the **Spiral Tech Carbon®** to release more power to the shot.

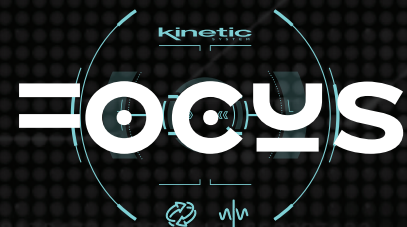
Diamond racquet designed for attacking players, the 3 layers of **Spiral Tech Carbon®** combined with the new **Soft EVA®** with 16° rigidity create a deadly ball strike

With its exclusive A-shape, the **PK-Bridge®** guarantees solidity when striking upwards. The **Kinetic System®** built into the racquet stabilises the frame during strokes to achieve maximum precision and a clean impact.

The **PVC Bumper** is designed to protect the racquet head without shifting the balance too much. The **Kinetic Damping Chamber®** in the handle reduces residual vibrations to ensure a firm and comfortable grip.

Thermal cover included. THERMOTEC®

Racket Length 455 mm	
Frame Profile 38 mm	
Weight 370 g	
Balance 270 mm	
Frame 75 in²	
Flex 70	



Suitable for attack players who want an agile and responsive tool near the net. The three layers of **Graphite Spiral Tech®** give precision and control and the latest generation **Hyper Soft EVA 13°** gives the ball thrust due to less stiffness.

The **3D Grain Surface®** combined with the **Geo-Dynamic Hole Design®** amplifies the impact on the ball.

The **Kinetic System®** together with the **Kinetic Damping Chamber®** ensures absolute comfort by drastically reducing vibrations and torsional distortion of the frame and gives sensitivity and control at impact.

Thermal cover included.

THERMATECH®

Racket Length | 455 mm

Frame Profile | 38 mm

Weight | 355 g

Balance | 265 mm

Frame | 74 in²

Flex | 60



FLEX 60

3 LAYERS GRAPHITE

HYPER SOFT
EVA#13



FLEX 68

3 LAYERS GRAPHITE

SOFT
EVA#16



High-performance diamond-shaped racket. Power and ball speed are ensured by the combination of high weight and optimised balance. The three layers of **Graphite Spiral Tech®** and the latest generation of **Soft EVA 16°** give precision and control.

The **3D Grain Surface®** combined with the **Geo-Dynamic Hole Design®** amplifies the impact on the ball.

The **Kinetic System®** together with the **Kinetic Damping Chamber®** ensures absolute comfort by drastically reducing vibrations and torsional distortion of the frame and gives sensitivity and control at impact.

Thermal cover included.

THERMATECH®

Racket Length | 455 mm

Frame Profile | 38 mm

Weight | 375 g

Balance | 270 mm

Frame | 74 in²

Flex | 68

LEGEND

The moderate weight and medium balance enhance the frame's manoeuvrability in all defensive shots and give it great responsiveness near the net. Control and Sensitivity are ensured by the combination of the round shape, the three layers of **Spiral Tech® Graphite** and the latest generation **Hyper Soft EVA® 13°**.

The **3D Grain Surface®** combined with the **Geo-Dynamic Hole Design®** amplifies the impact on the ball.

The **Kinetic System®** together with the **Kinetic Damping Chamber®** ensures absolute comfort by drastically reducing vibrations and torsional distortion of the frame and gives sensitivity and control at impact.

Thermal cover included.

THERMOTEC®

Racket Length | 455 mm

Frame Profile | 38 mm

Weight | 355 g

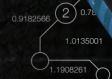
Balance | 260 mm

Frame | 74,5 in²

Flex | 60



HYPER SOFT
EVA#13



FLEX 60



HYPER SOFT
EVA#13

LEGEND PRO

Control and Sensitivity are guaranteed by the combination of a rounded shape, three layers of **Spiral Tech Carbon®**, and latest generation **Hyper Soft EVA® 13°**. The weight of the frame allows it to attack the ball on overhead shots and the medium balance keeps the frame manoeuvrable and responsive.

The **3D Grain Surface®** combined with the **Geo-Dynamic Hole Design®** amplifies the impact on the ball.

The **Kinetic System®** together with the **Kinetic Damping Chamber®** ensures absolute comfort by drastically reducing vibrations and torsional distortion of the frame and gives sensitivity and control at impact.

Thermal cover included.

THERMOTEC®

Racket Length | 455 mm

Frame Profile | 38 mm

Weight | 370 g

Balance | 265 mm

Frame | 74,5 in²

Flex | 60

TURBO

A round-shaped head presented in two versions and 3 colours, with high playability that allows the player of any level to get an immediate feel for the game.

The three layers of **Spiral Tech Carbon®** ensure stability and control. The particularly generous size of the impact surface and the state-of-the-art **Soft EVA® 16°** allow for ease of impact in all playing situations. The different hole diameters allow excellent impact on the ball.

The **Speed** version's low weight gives the tool additional manoeuvrability.

Cover included.

	Racket Length 455 mm
	Frame Profile 38 mm
	Weight Turbo 365 g
	Weight T.Speed 355 g
	Balance 265 mm
	Frame 77 in²
	Flex 61



FLEX 61

3 LAYERS
GRAPHITE

SOFT
EVA#16

SEASON 2K23

FLEX 61

3 LAYERS
GRAPHITE

SOFT
EVA#16



SMASH

The ideal racket for those who want to start dominating the court.

Teardrop shape for a generous impact surface in three layers of graphite and fibreglass plus an additional layer of carbon for better protection, **Soft EVA 16°** core.

Lightweight, manoeuvrable, with a large sweet spot, it immediately guarantees a perfect playing feel and maximum control on every shot, both from the baseline and when advancing to the net.

Available in two camouflage colours.

Racket Length | 455 mm

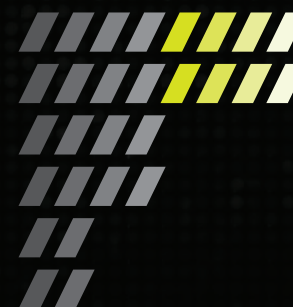
Frame Profile | 38 mm

Weight Turbo | 365 g

Balance | 265 mm

Frame | 74 in²

Flex | 61



GLOBO PADEL

High quality balls approved by the International Padel Federation.

HIGH CONTAIN WOOL PREMIUM FELT.

SUPERCONSISTENCY.

UNMATCHED CONTROL.

MAXIMUM PERFORMANCE & DURABILITY.



SOFT
EVA#16

SEASON 2K23

ACCESSORIES



XTREME
TRIPLE EFFECT
Technical socks
2 pairs pack



WRIST BAND
Blister pack
containing two pieces.



HEAD BAND
Box 1 piece



CART
WORKOUT
Folding 40x40x90cm



SUPERWRAP
OVERGRIP BLISTER
Pack of 3 pieces
Box: 60 pieces
Thickness: 0.75mm



ULTRAWET
OVERGRIP BLISTER
Pack of 12 pieces
Box: 30 Pieces
Thickness: 0.60mm



KEYCHAIN
BALL
Box 1 piece

BAGS



BACKPACK
TOUR
36x44x26cm



LONG BACKPACK
TOUR
Thermal 70x34x26cm
THERMOTEC®



PADEL BAG
TOUR
Thermal 30x32x55cm
THERMOTEC®



SPORT BAG
TOUR
Thermal 58x26x28cm
THERMOTEC®



YOUKEN

WWW.PRO-KENNEX.COM

